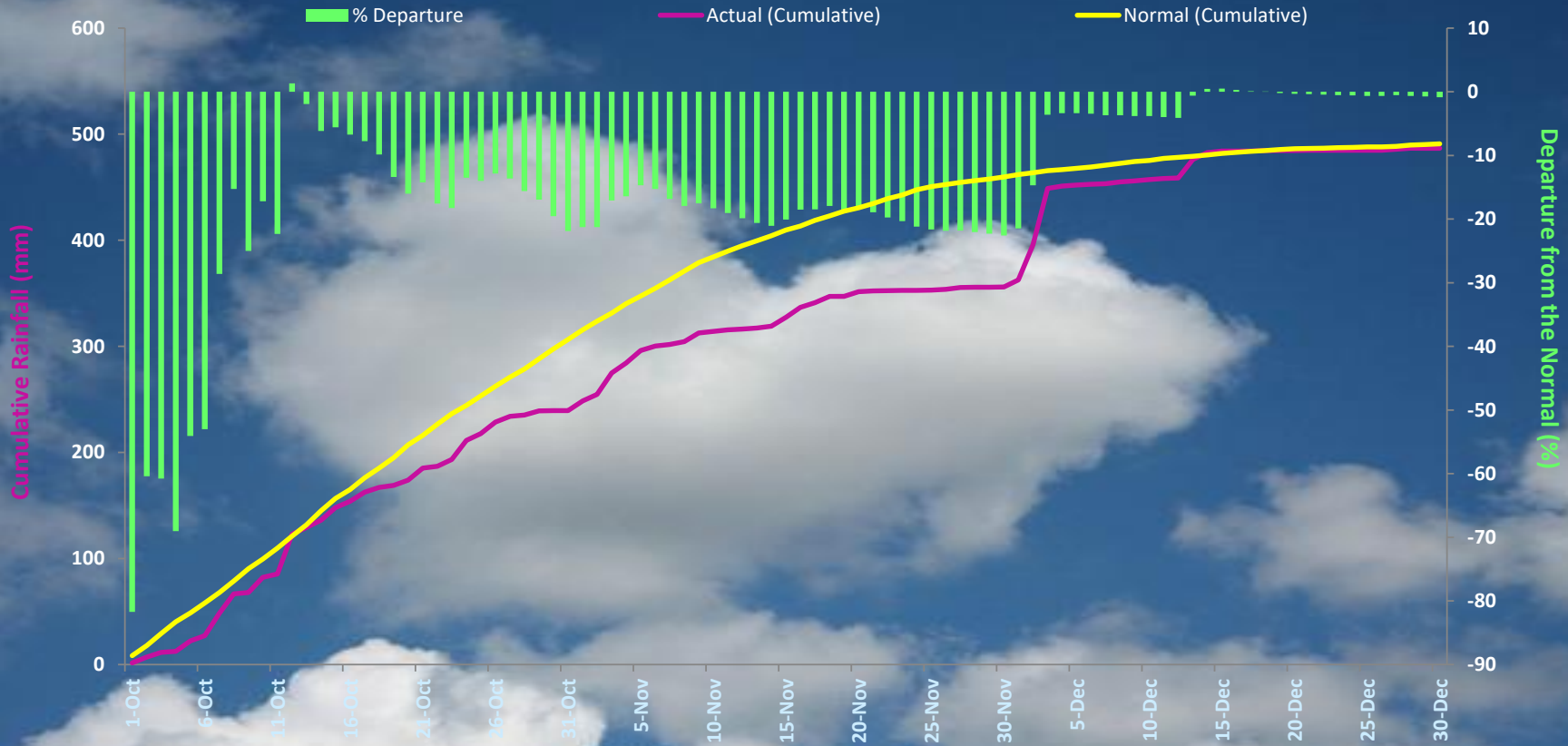


PERFORMANCE OF NE MONSOON 2024 OVER KERALA From 01-Oct-2024 to 31/Dec/2024

CUMULATIVE RAINFALL FOR KERALA NE MONSOON 2024



ACTUAL= 487.2 mm

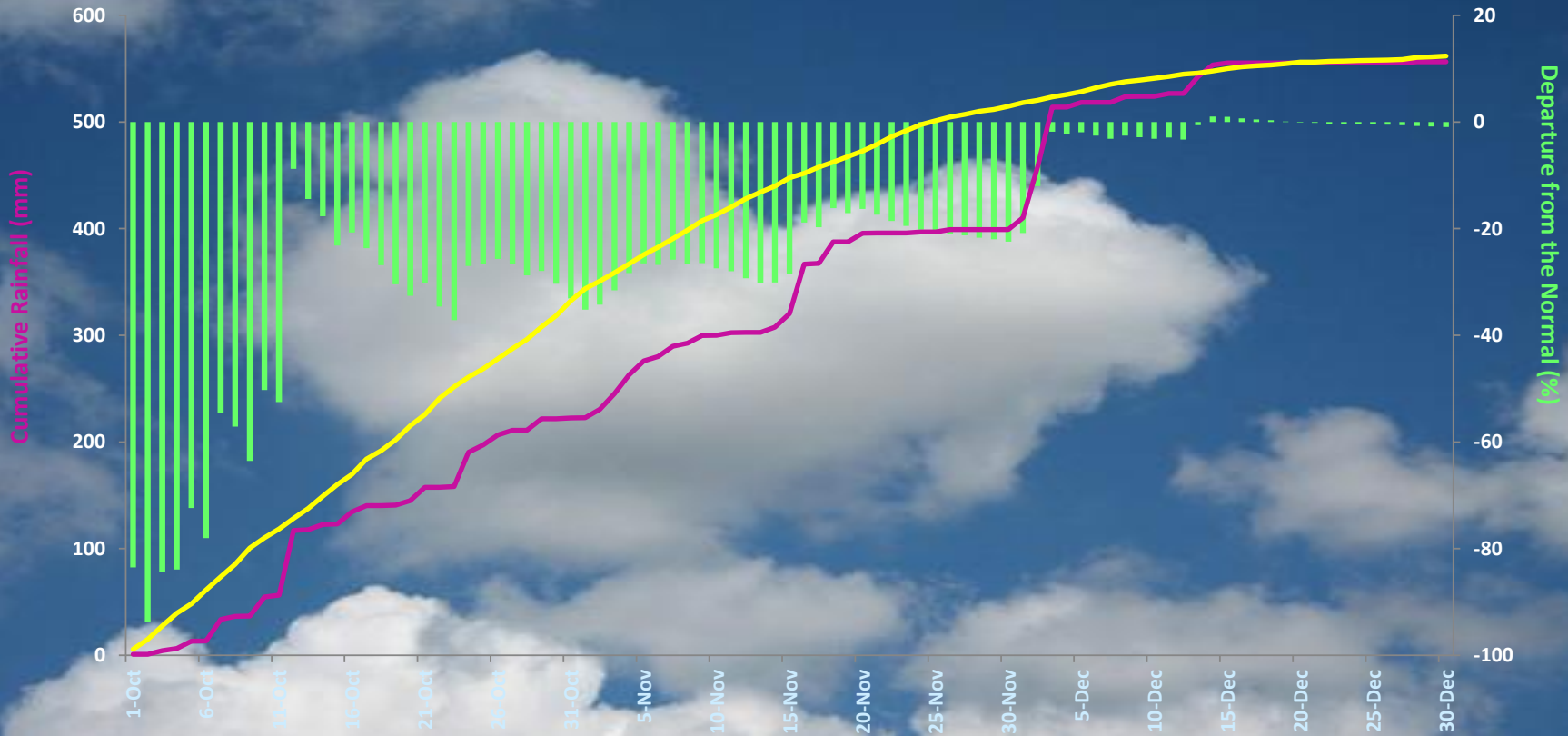
NORMAL= 492 mm

DEPARTURE= -1 %

PERFORMANCE OF NE MONSOON 2024 OVER ALAPPUZHA From 01-Oct-2024 to 31/Dec/2024

CUMULATIVE RAINFALL FOR ALAPPUZHA - NE MONSOON 2024

■ % Departure — Actual (Cumulative) — Normal (Cumulative)



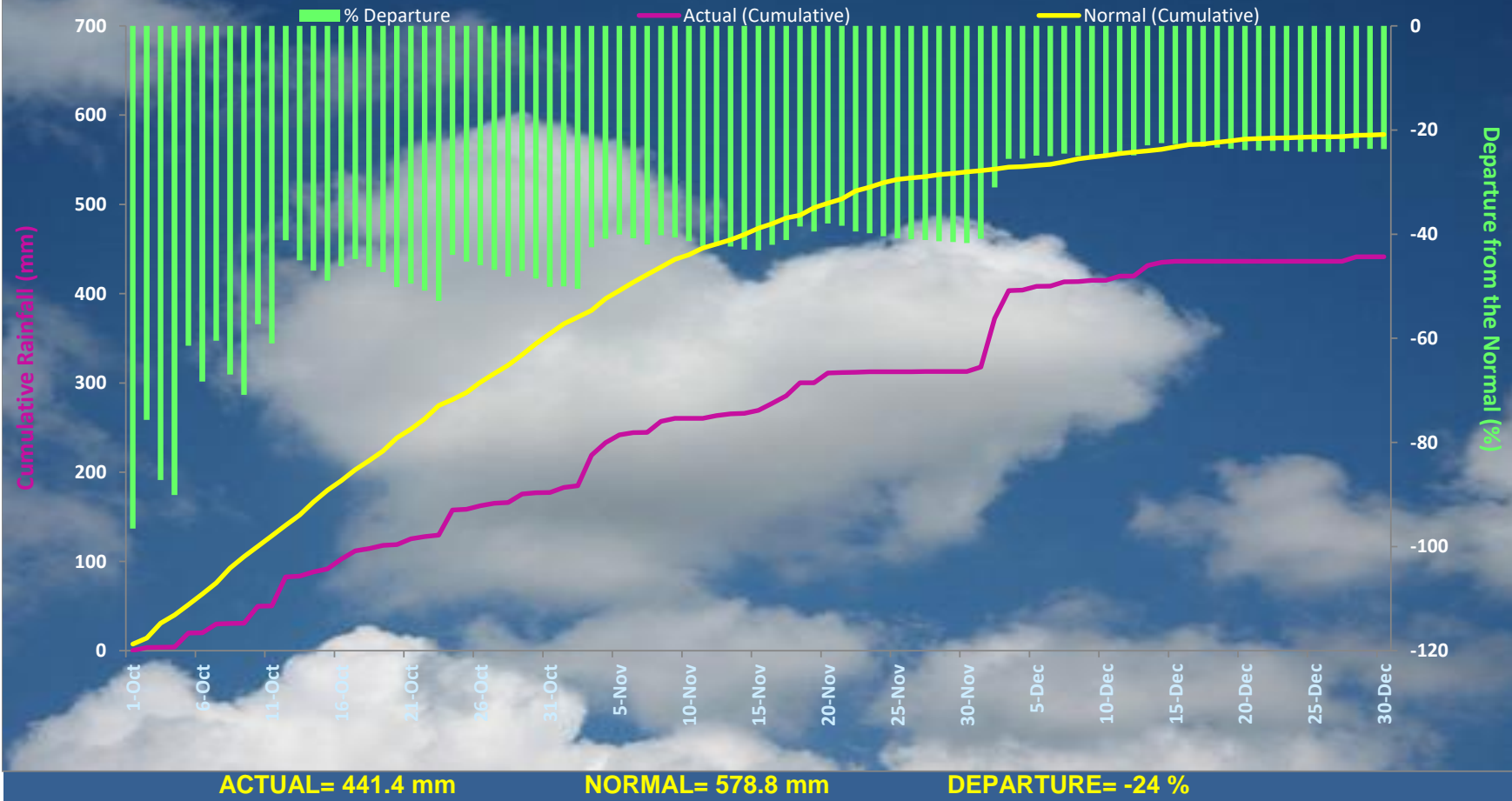
ACTUAL= 557.5 mm

NORMAL= 565 mm

DEPARTURE= -1 %

PERFORMANCE OF NE MONSOON 2024 OVER ERNAKULAM From 01-Oct-2024 to 31/Dec/2024

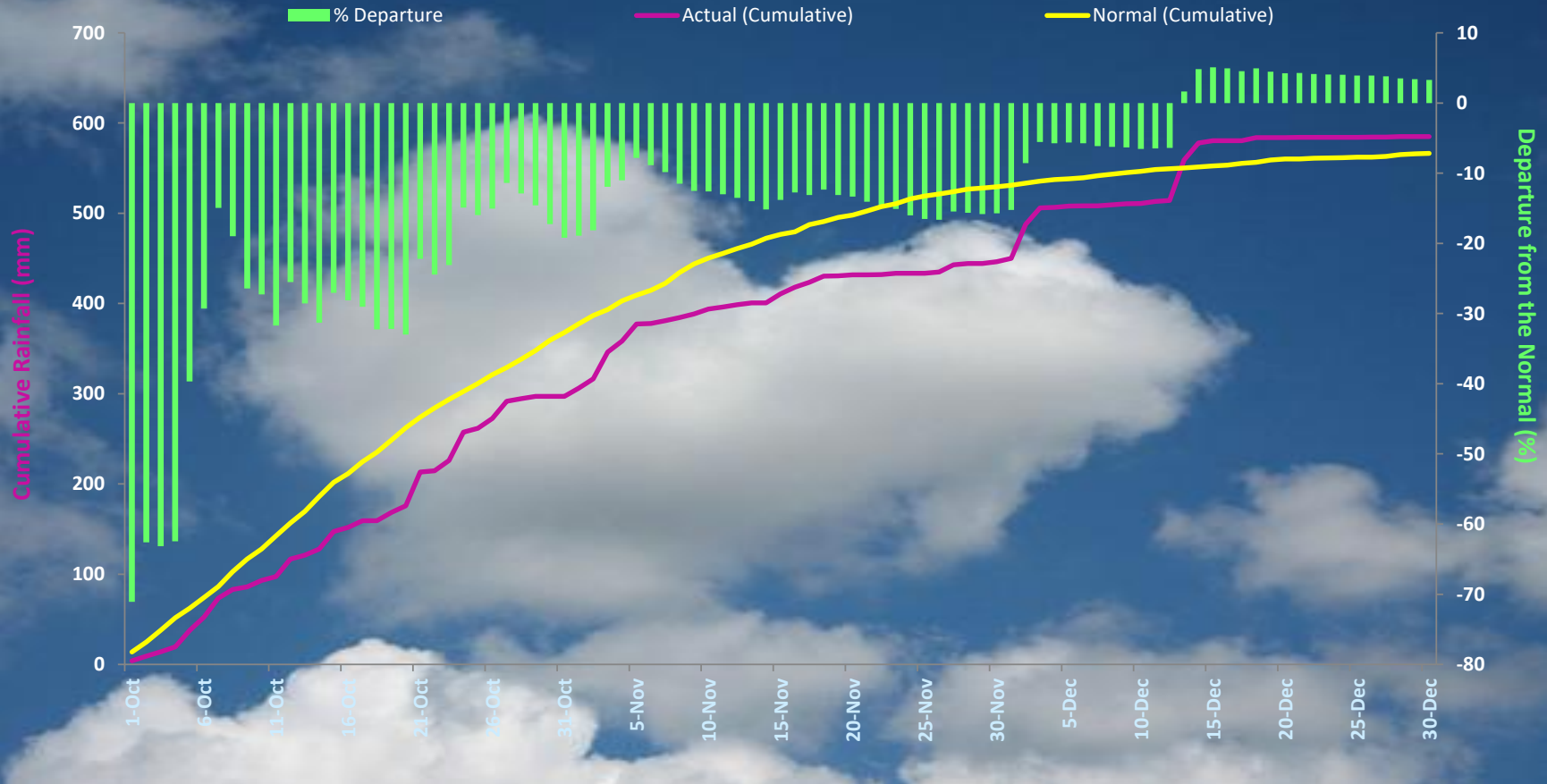
CUMULATIVE RAINFALL FOR ERNAKULAM- NE MONSOON 2024



PERFORMANCE OF NE MONSOON 2024 OVER IDUKKI

From 01-Oct-2024 to 31/Dec/2024

CUMULATIVE RAINFALL FOR IDUKKI- NE MONSOON 2024



ACTUAL= 586.7 mm

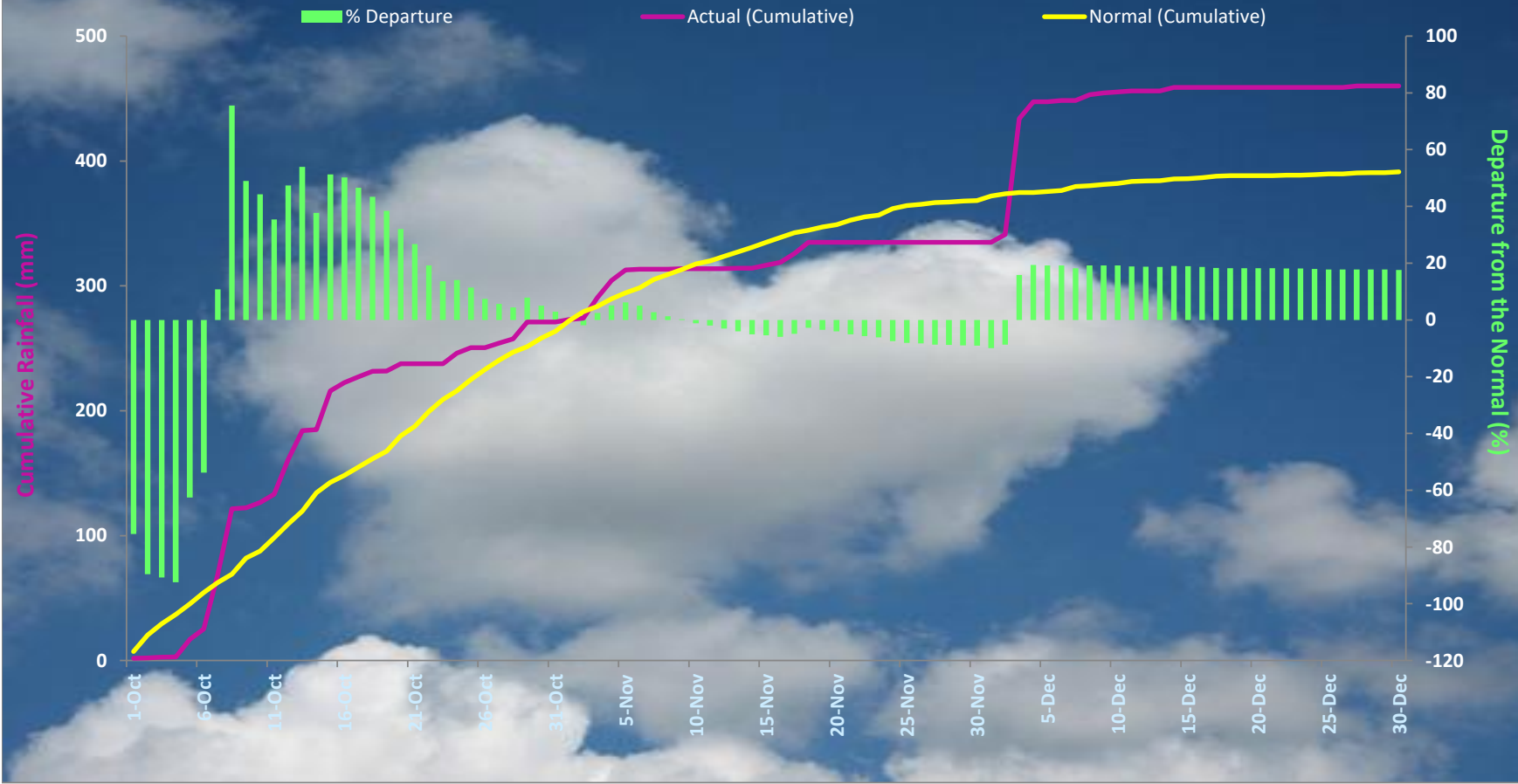
NORMAL= 567.3 mm

DEPARTURE= 3 %

PERFORMANCE OF NE MONSOON 2024 OVER KANNUR

From 01-Oct-2024 to 31/Dec/2024

CUMULATIVE RAINFALL FOR KANNUR- NE MONSOON 2024



ACTUAL= 460.1 mm

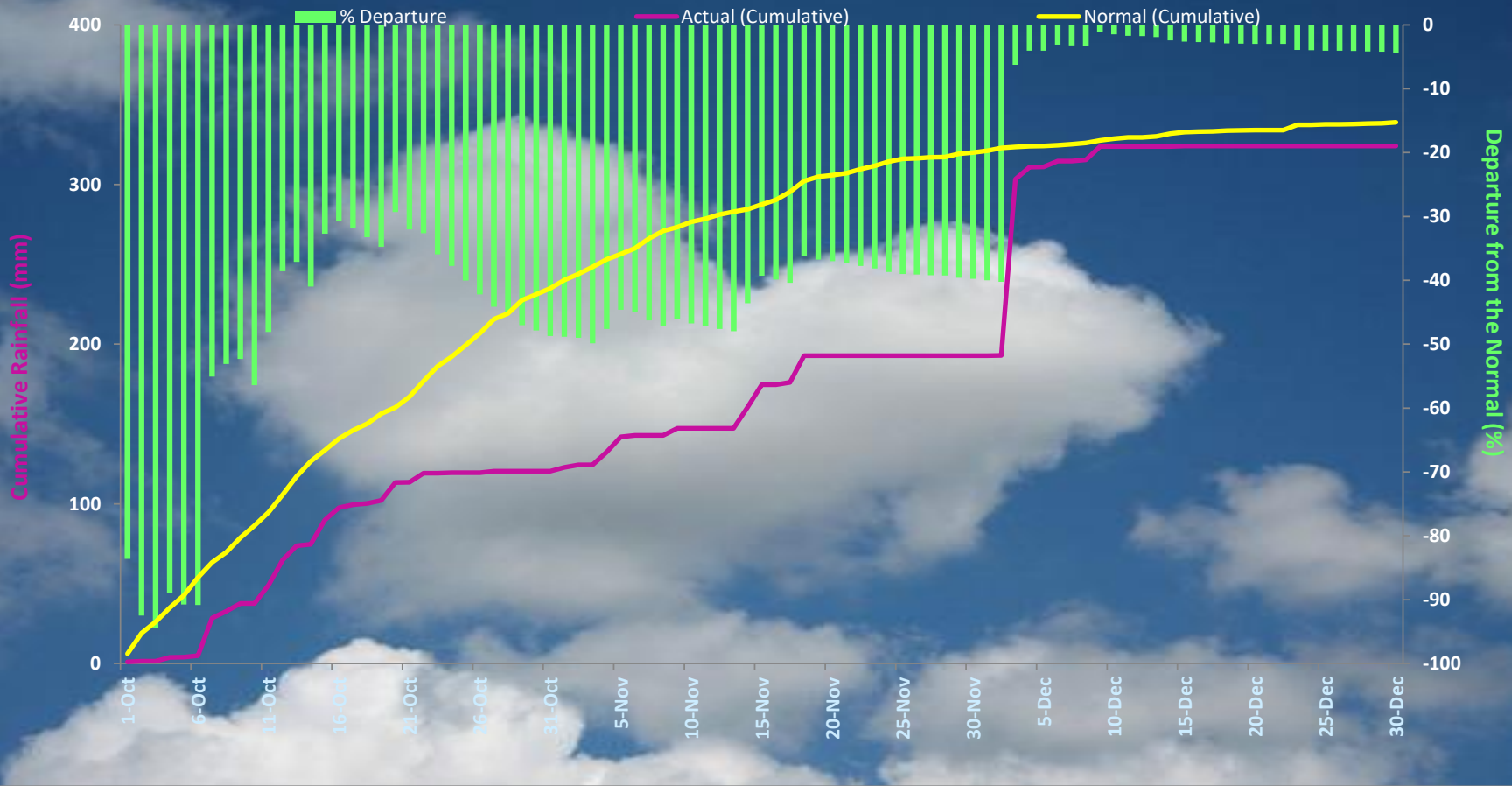
NORMAL= 391.3 mm

DEPARTURE= 18 %

PERFORMANCE OF NE MONSOON 2024 OVER KASARAGOD

From 01-Oct-2024 to 31/Dec/2024

CUMULATIVE RAINFALL FOR KASARAGOD- NE MONSOON 2024



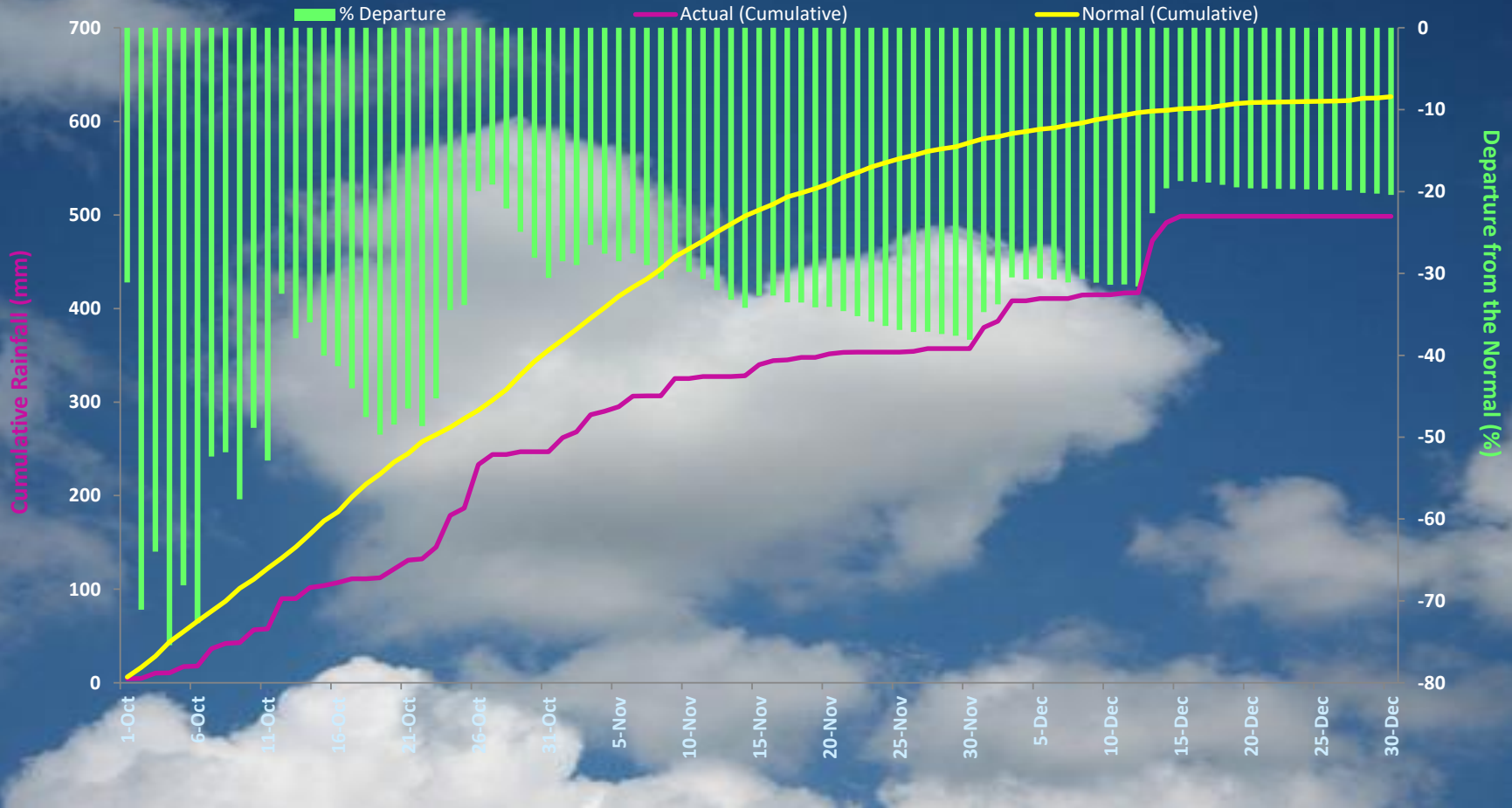
ACTUAL= 324.1 mm

NORMAL= 339.2 mm

DEPARTURE= -4 %

PERFORMANCE OF NE MONSOON 2024 OVER KOLLAM
From 01-Oct-2024 to 31/Dec/2024

CUMULATIVE RAINFALL FOR KOLLAM- NE MONSOON 2024



ACTUAL= 498.7 mm

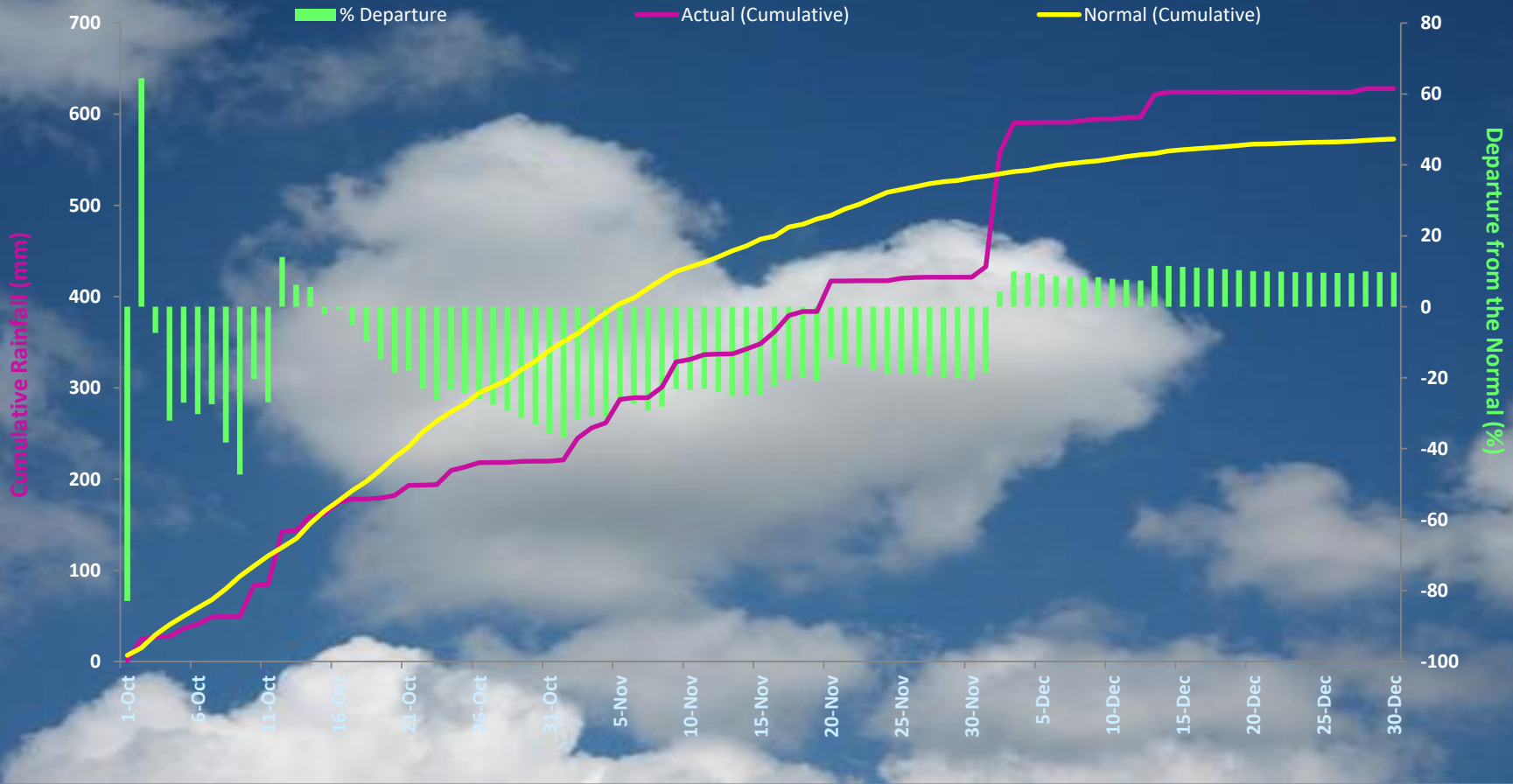
NORMAL= 628.2 mm

DEPARTURE= -21 %

PERFORMANCE OF NE MONSOON 2024 OVER KOTTAYAM

From 01-Oct-2024 to 31/Dec/2024

CUMULATIVE RAINFALL FOR KOTTAYAM- NE MONSOON 2024



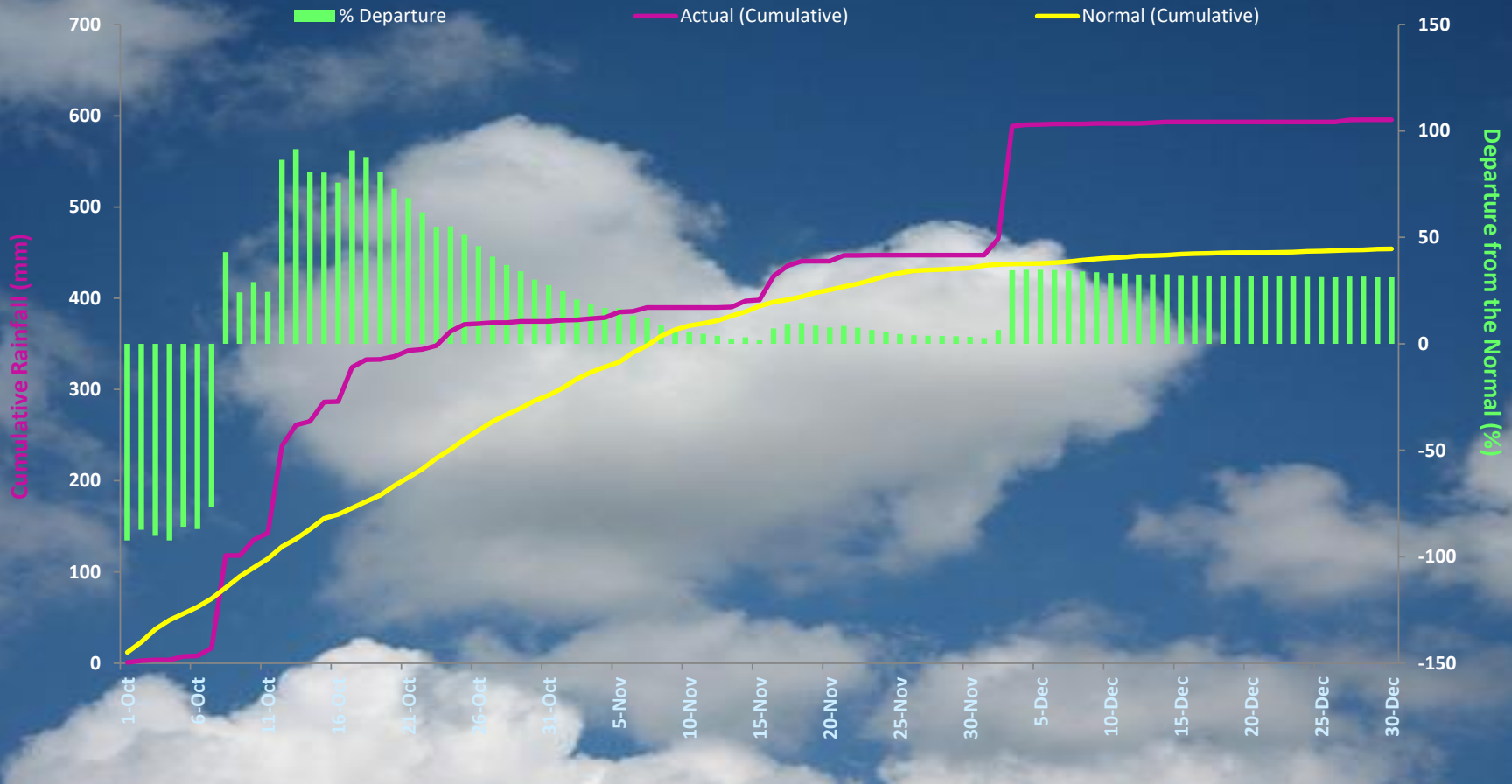
ACTUAL= 628.1 mm

NORMAL= 574.2 mm

DEPARTURE= 9 %

PERFORMANCE OF NE MONSOON 2024 OVER KOZHIKODE From 01-Oct-2024 to 31/Dec/2024

CUMULATIVE RAINFALL FOR KOZHIKODE- NE MONSOON 2024



ACTUAL= 595.7 mm

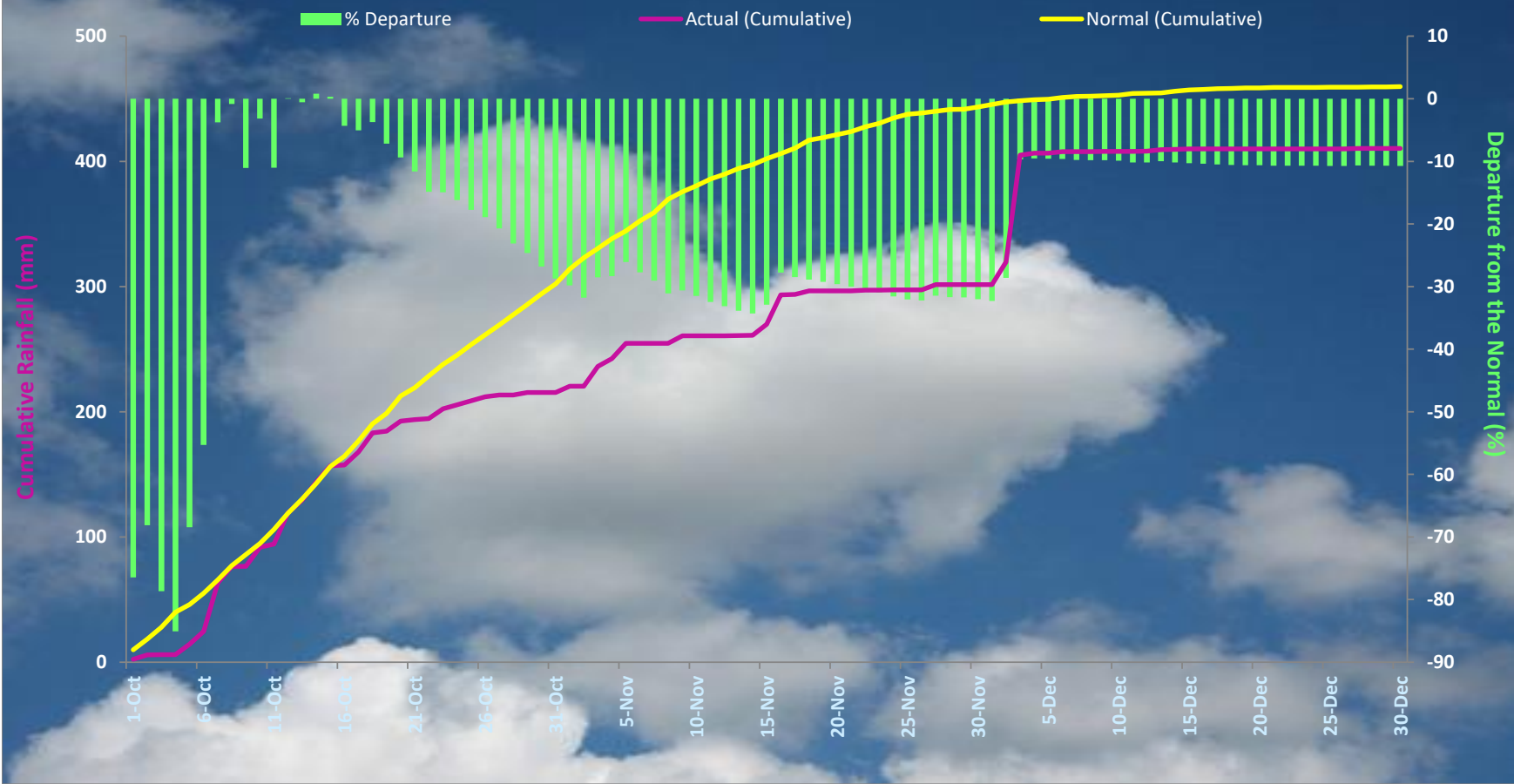
NORMAL= 454.2 mm

DEPARTURE= 31 %

PERFORMANCE OF NE MONSOON 2024 OVER MALAPPURAM

From 01-Oct-2024 to 31/Dec/2024

CUMULATIVE RAINFALL FOR MALAPPURAM- NE MONSOON 2024



ACTUAL= 410.3 mm

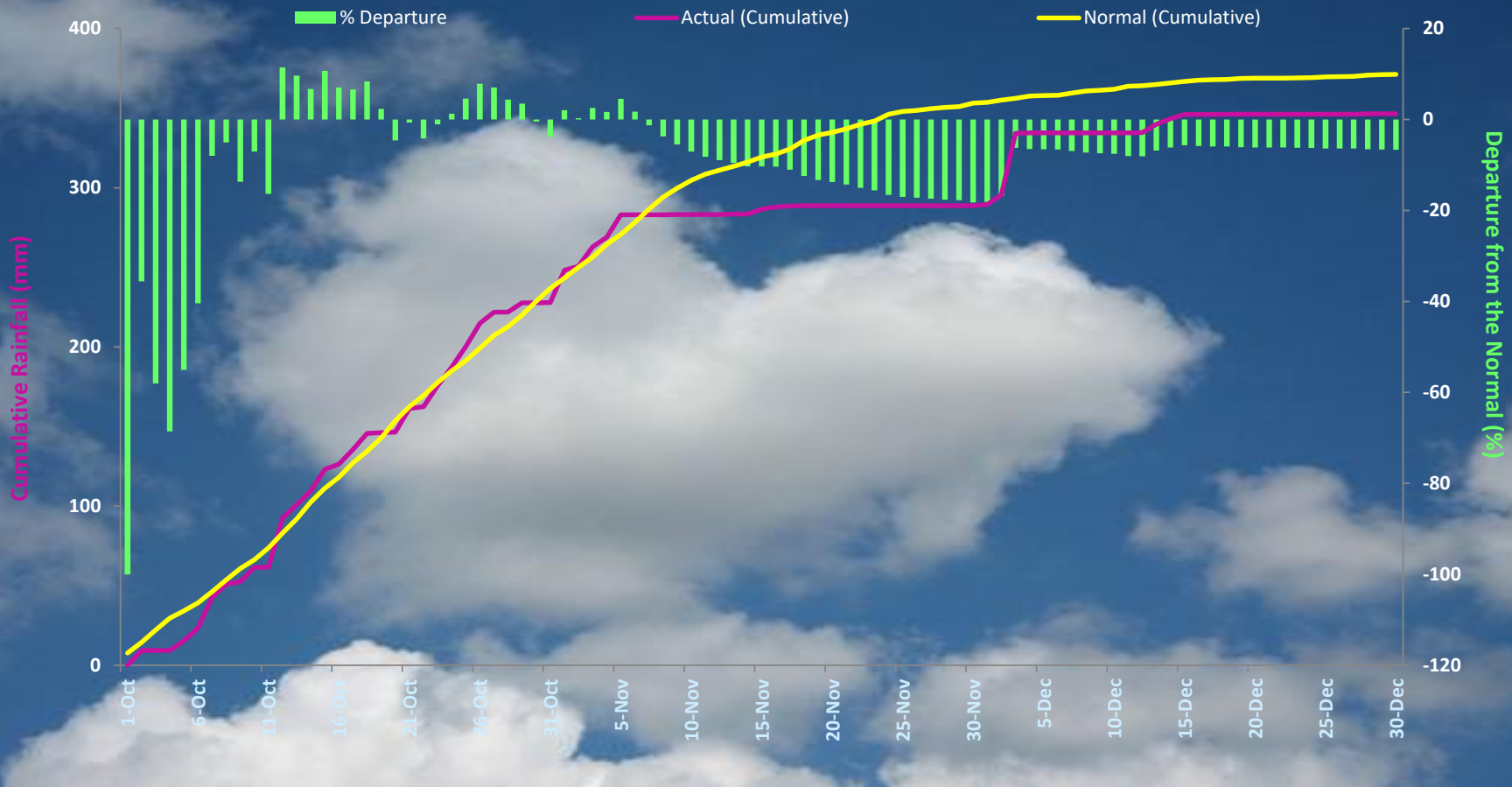
NORMAL= 459.8 mm

DEPARTURE= -11 %

PERFORMANCE OF NE MONSOON 2024 OVER PALAKKAD

From 01-Oct-2024 to 31/Dec/2024

CUMULATIVE RAINFALL FOR PALAKKAD- NE MONSOON 2024



ACTUAL= 347.5 mm

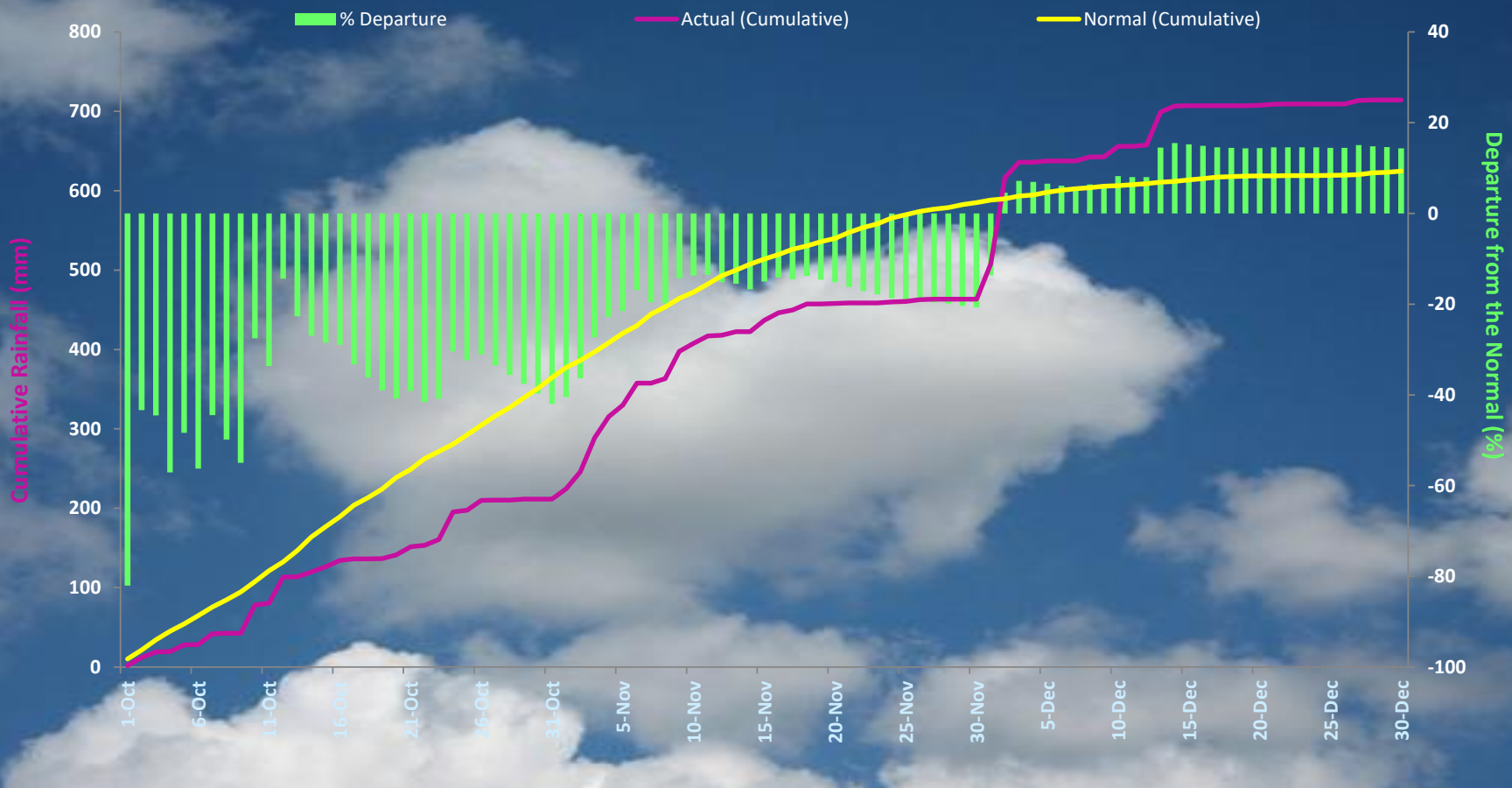
NORMAL= 371.4 mm

DEPARTURE= -6 %

PERFORMANCE OF NE MONSOON 2024 OVER PATHANAMTHITTA

From 01-Oct-2024 to 31/Dec/2024

CUMULATIVE RAINFALL FOR PATHANAMTHITTA- NE MONSOON 2024



ACTUAL= 714.3 mm

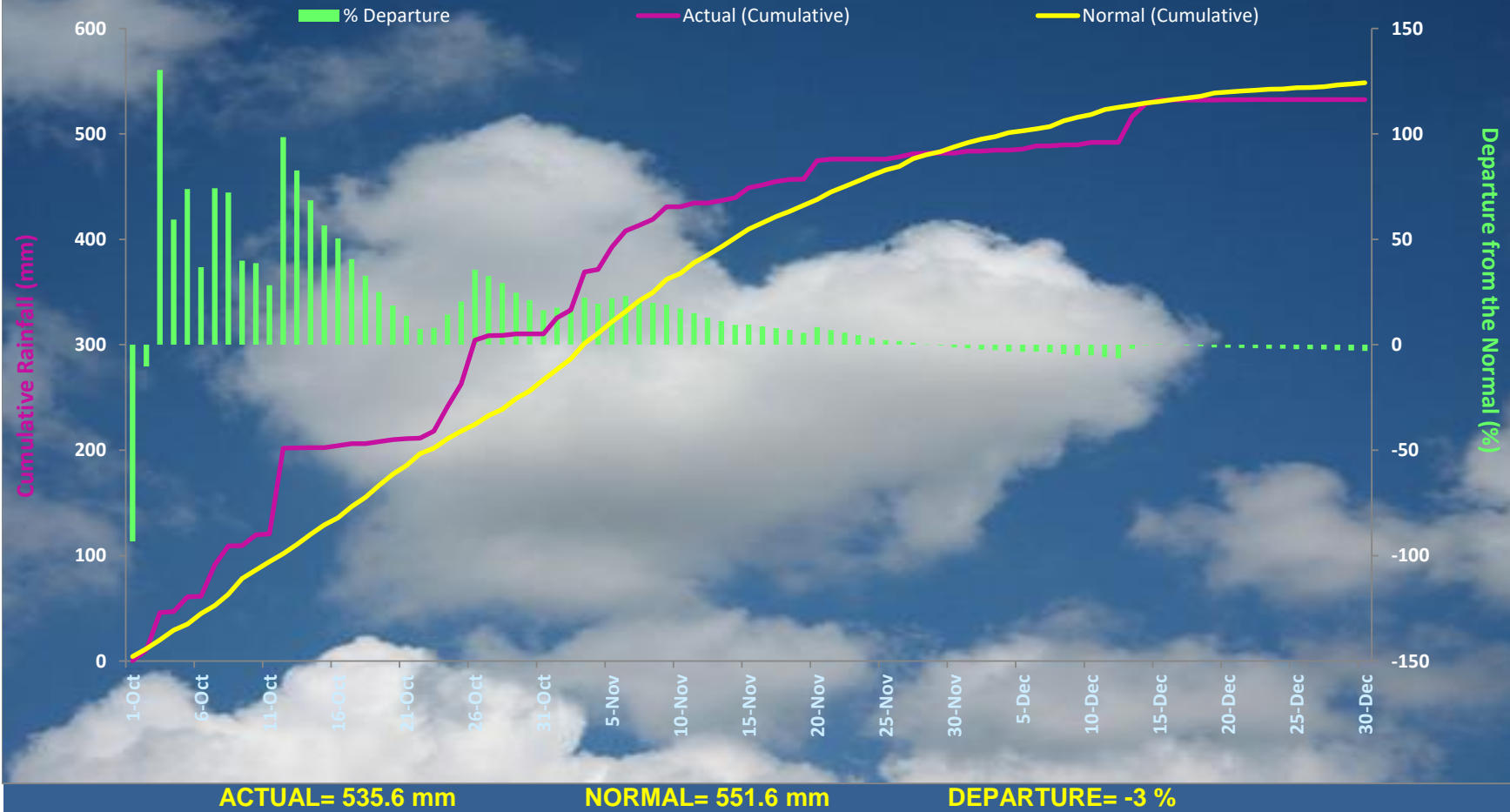
NORMAL= 629 mm

DEPARTURE= 14 %

PERFORMANCE OF NE MONSOON 2024 OVER THIRUVANANTHAPURAM

From 01-Oct-2024 to 31/Dec/2024

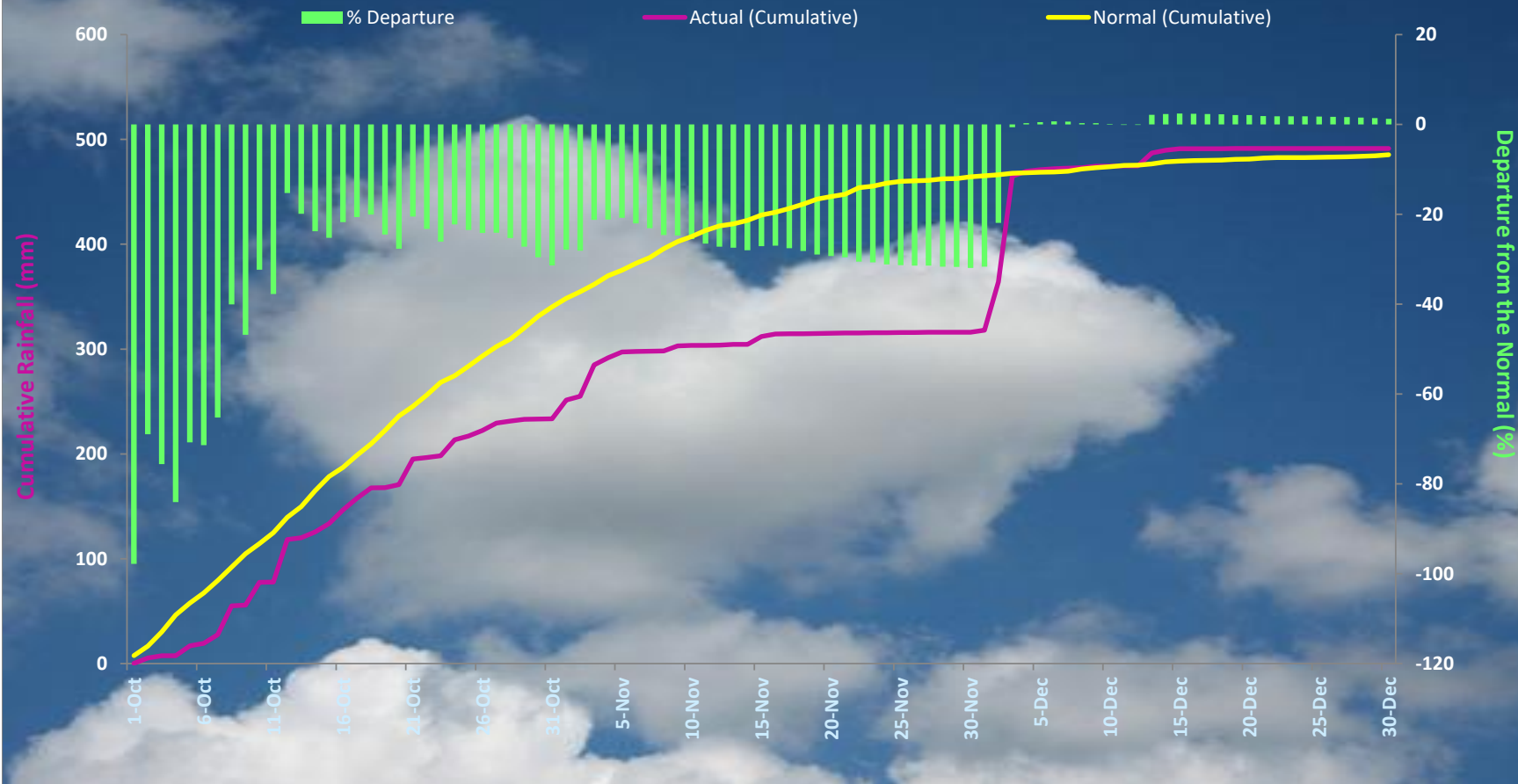
CUMULATIVE RAINFALL FOR THIRUVANANTHAPURAM- NE MONSOON 2024



PERFORMANCE OF NE MONSOON 2024 OVER THRISSUR

From 01-Oct-2024 to 31/Dec/2024

CUMULATIVE RAINFALL FOR THRISSUR- NE MONSOON 2024



ACTUAL= 491.3 mm

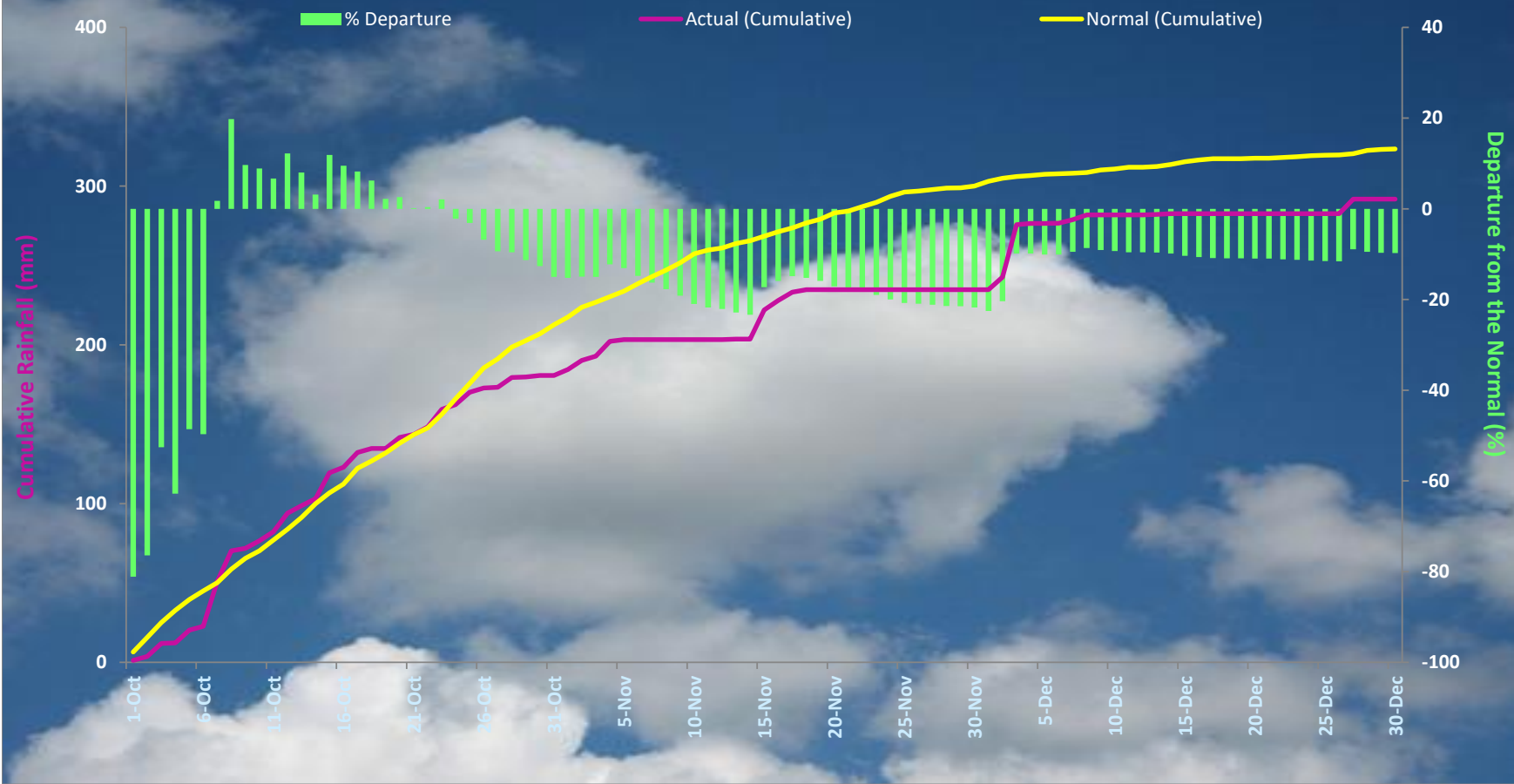
NORMAL= 485.6 mm

DEPARTURE= 1 %

PERFORMANCE OF NE MONSOON 2024 OVER WAYANAD

From 01-Oct-2024 to 31/Dec/2024

CUMULATIVE RAINFALL FOR WAYANAD- NE MONSOON 2024



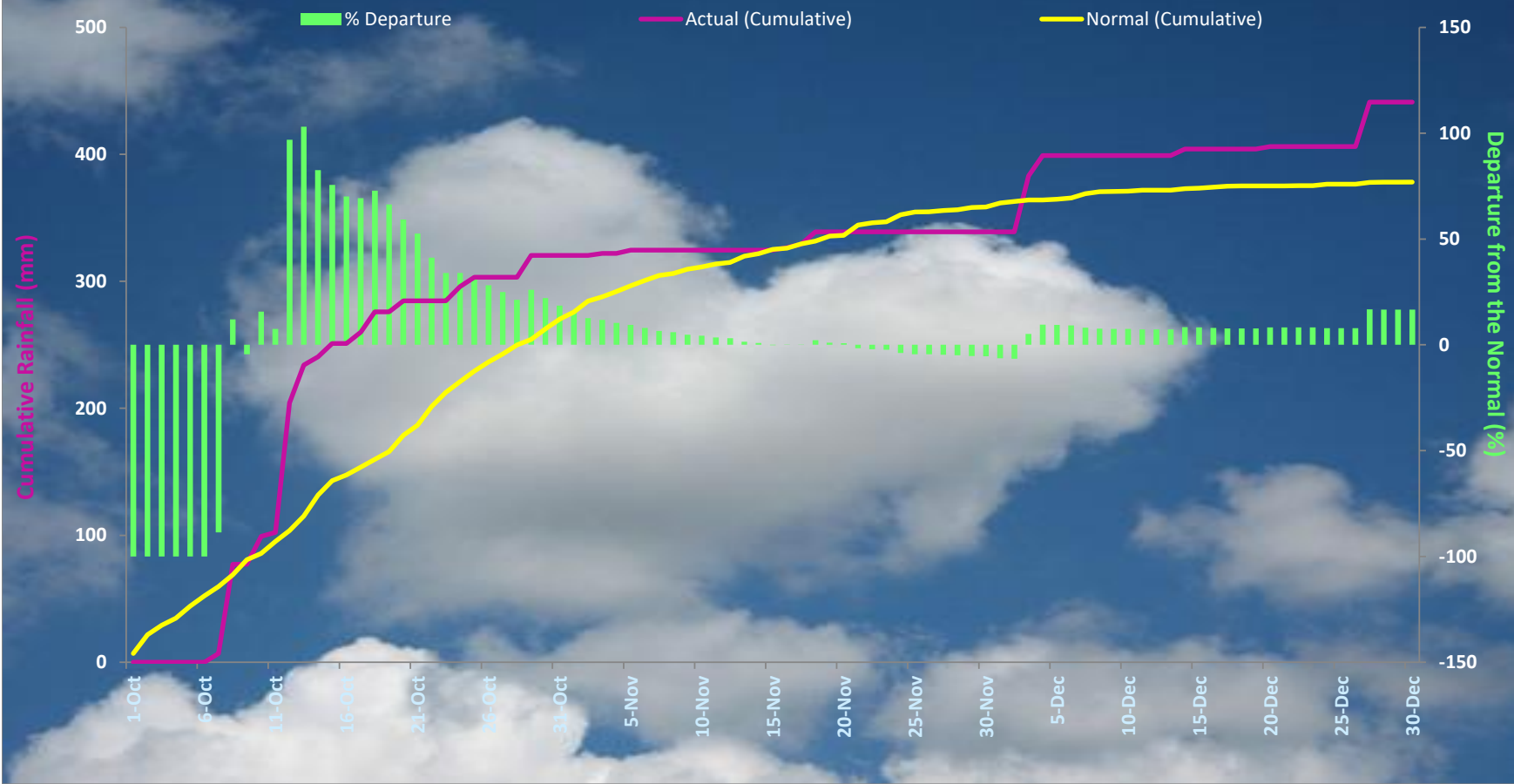
ACTUAL= 291.8 mm

NORMAL= 324 mm

DEPARTURE= -10 %

PERFORMANCE OF NE MONSOON 2024 OVER MAHE From 01-Oct-2024 to 31/Dec/2024

CUMULATIVE RAINFALL FOR MAHE- NE MONSOON 2024



ACTUAL= 441.2 mm

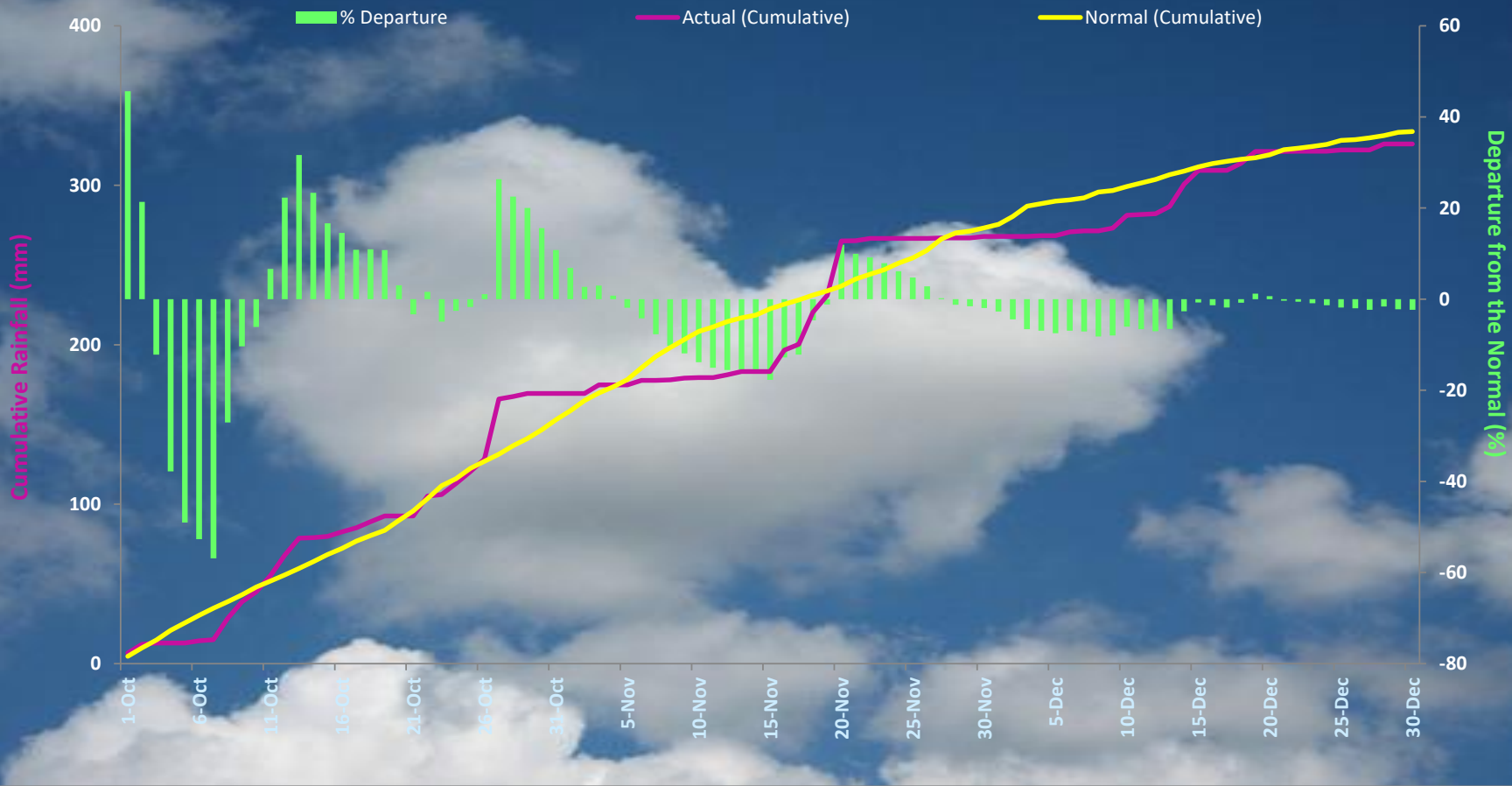
NORMAL= 378.2 mm

DEPARTURE= 17 %

PERFORMANCE OF NE MONSOON 2024 OVER LAKSHADWEEP

From 01-Oct-2024 to 31/Dec/2024

CUMULATIVE RAINFALL FOR LAKSHADWEEP- NE MONSOON 2024



ACTUAL= 325.9 mm

NORMAL= 334.9 mm

DEPARTURE= -3 %